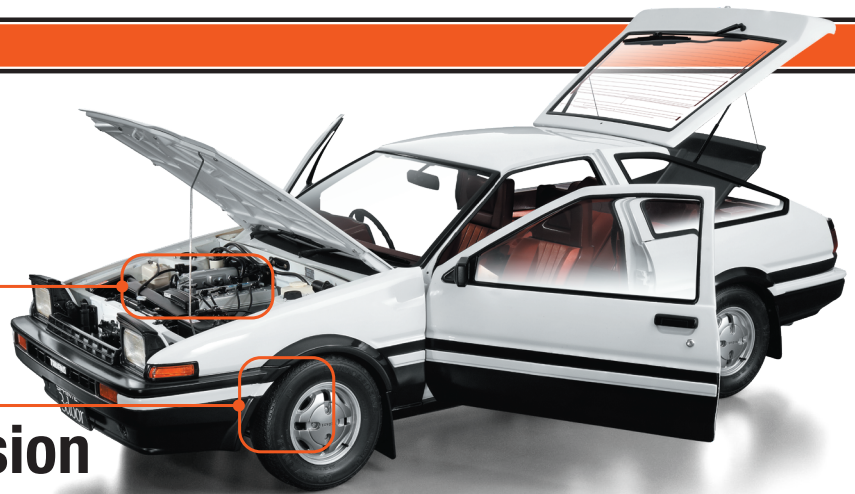


## Issue 4

In addition to securing the lower arms, which form the base of the front suspension, we will also assemble the precision delivery pipes and manifold around the engine.

## Assemble the Suspension and Intake Manifold



※ In this guide "Left" or "(L)", and "Right" or "(R)", refer to the direction as viewed from the driver's seat.



4-A	Front Member
4-B	Steering Rack
4-C	Bracket
4-D	Front Lower Arm
4-E	Fuel Delivery Pipe
4-F	Fuel Injectors ×4 (with runner)
4-G	Pulsation Damper
4-H	Pressure Regulator
4-I	Intake Manifold (L)
4-J	Intake Manifold (R)
4-K	Gasket
AM Screw	(1.7×4 mm) ×3 (1Spare)
BM Screw	(1.7×5mm) ×3 (1Spare)
CM Screw	(2.0×10 mm) ×2 (1Spare)
AP Screw	(1.7×4 mm) ×4 (1Spare)

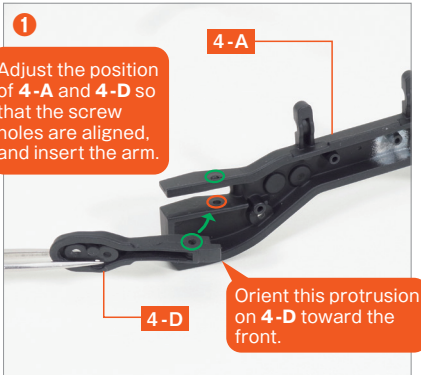
View the follow-along video



Tools required for this issue

Model nippers or a cutter

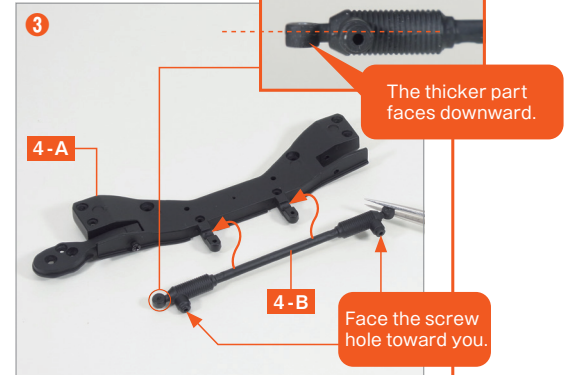
### step 1 Attach the Lower Arm and Steering Rack



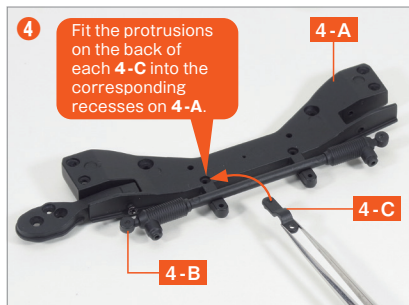
Insert the **Front Lower Arm 4-D** into the **Front Member 4-A** as shown, and adjust it so that the screw holes are aligned.



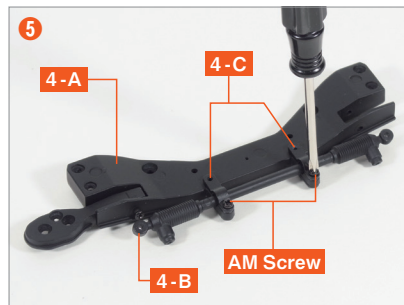
Insert a **CM screw** into the aligned hole from step 1 and tighten it through to the opposite side of **4-A**. Make sure that **4-D** can move freely.



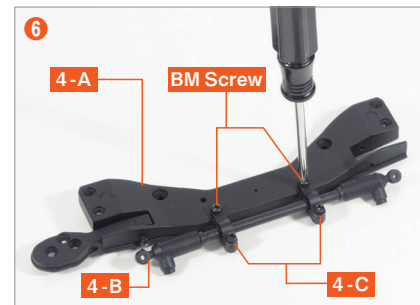
Align the shaft section of the **Steering Rack 4-B** with the mounting position on **4-A**.



Align the two **Brackets 4-C** with the screw holes on the **4-A**, and place them over the **4-B**.

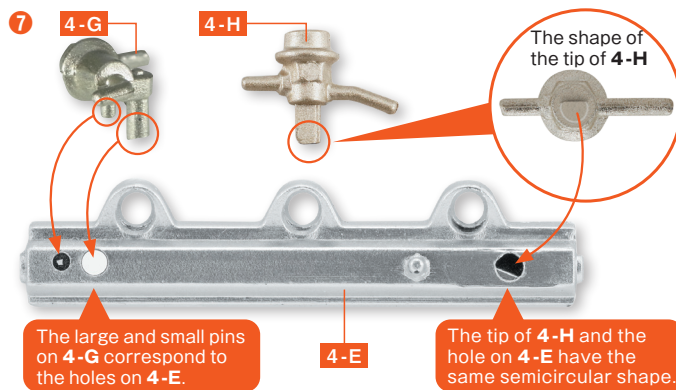


Fix **4-C** to **4-A** using an **AM screw**.

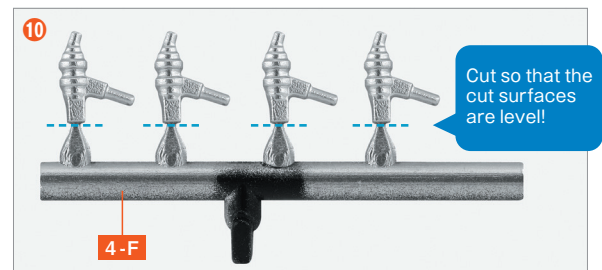
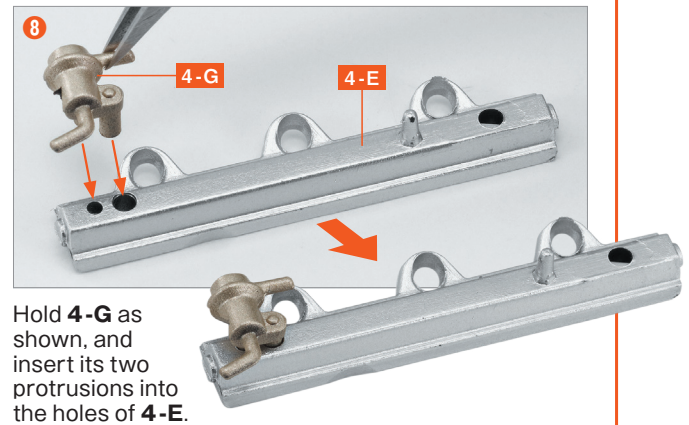
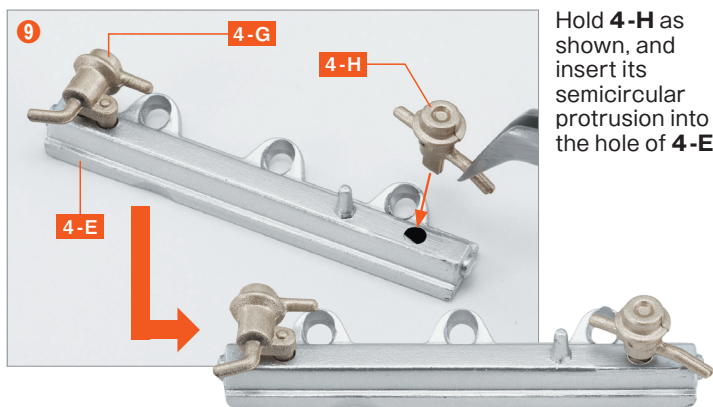


Secure the other side with **BM screws**.

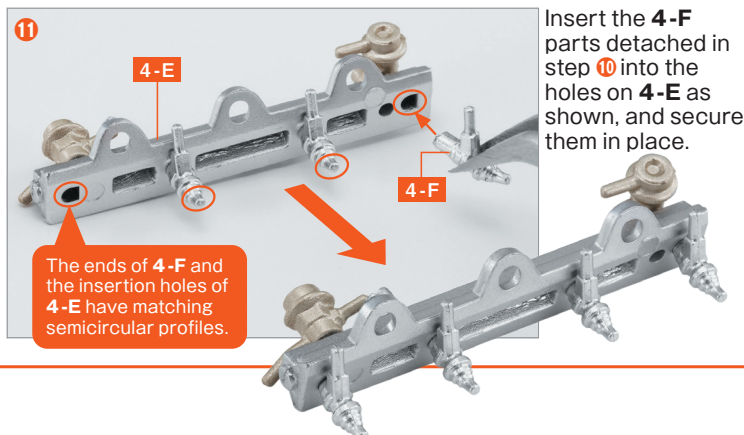
## step 2 Assemble the Fuel Delivery Pipe



Check the shapes and insertion positions of the **Fuel Delivery Pipe 4-E**, the **Pulsation Damper 4-G**, and the **Pressure Regulator 4-H** by referring to the photos.



Detach the four **Fuel Injectors 4-F** from the runner as shown. Use model nippers or a cutter with a new blade, and make sure the cut surfaces are level.



### Cutting Parts from the Runner

When removing parts from the runner, it's helpful to use model nippers. When cutting, position the flat side of the blade against the point you want to cut, as shown.

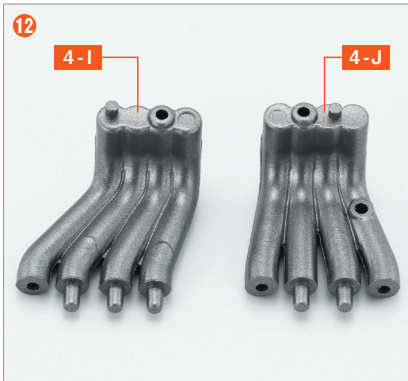
When using a cutter, start with a new blade first as this will give you a clean cut and ensure the parts fit securely when assembled.



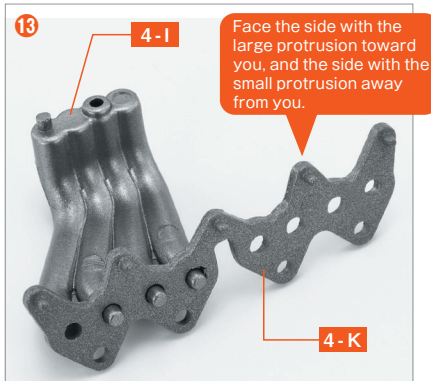
If any of the parts attached in step 2 are loose, apply a small amount of multipurpose adhesive to the tips of the parts with a toothpick to secure them.



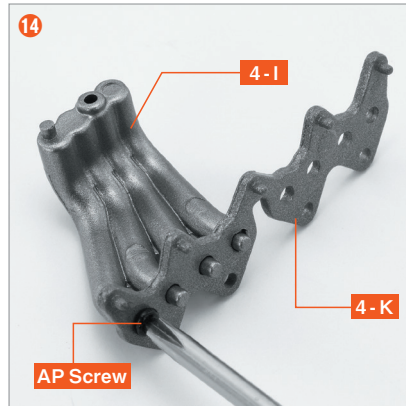
## step 3 Attach the Gasket to the Intake Manifold



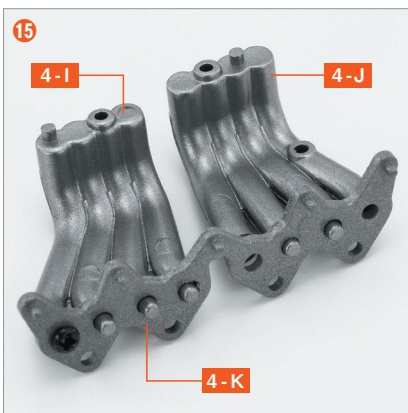
Check the shape of the intake manifold. The one with three pins at the front is **4-I**, and the one with two pins is **4-J**.



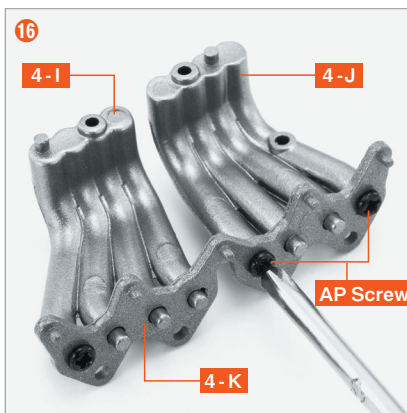
Face the side of **Gasket 4-K** with the protrusions toward you, and insert the three pins at the front of the **Intake Manifold (L) 4-I** into the holes of **4-K** from the back.



Secure one point with an **AP screw** as shown.



Insert the two pins at the front of the **Intake Manifold (R) 4-J** into the holes of **4-K** as shown.



Secure two points with **AP screws** as shown.

**Step complete**



## Complete

The assembly for Issue 4 is complete. In the next issue, the suspension structural parts will be attached to the Front Member assembled this issue, and the Fuel Delivery Pipe and Intake Manifold will also be mounted onto the engine block.

